



The Atlantic Cup

June 9 - 10, 2018

Portland, Maine

Sailing Instructions - Inshore Leg

1 RULES

- 1.1 The regatta will be governed by the *rules* as defined in *The Racing Rules of Sailing* (RRS) including the US Sailing Prescriptions.
- 1.2 In the event of a conflict between the Notice of Race (NOR) and these Sailing Instructions (SI's), the SI's shall prevail. This changes RRS 63.7.
- 1.3 Yachts shall comply with the US Sailing near shore safety requirements and the Class 40 Appendix to class rule required equipment.
- 1.4 Jack stays are not be required. This changes Class 40 Appendix to class rule 2.1.

2 NOTICES TO COMPETITORS

- 2.1 Notices to Competitors will be posted on the Official Notice Board located at Maine Wharf, Portland. The Race Committee intends to broadcast pertinent race information on VHF Ch. 69. Failure of such communication to be given or received shall not be grounds for redress. This changes RRS 62.1

3 CHANGES TO THE SAILING INSTRUCTIONS

- 3.1 Changes to the Sailing Instructions (SIs) will be posted on the Official Notice Board prior to 0900 on the day it will take effect, except that any change to the schedule of races will be posted before 2000 on the day before it will take effect.

4 SIGNALS MADE ASHORE

- 4.1 When "AP" is displayed ashore, "one minute" is replaced with "not less than one hour". This changes Race Signal AP.

5 STARTING AND FINISHING LOCATION

- 5.1 The starting and finishing location will be in the vicinity of Fish Point, Portland Harbor.

6 SCHEDULE

- 6.1 All times are in Eastern Daylight Time.
- 6.2 The initial Warning Signal will not be made before 1100 hours on each day of racing.
- 6.3 No initial Warning Signal shall be made after 1530 on Sunday, June 10th.

7 COURSES AND MARKS

- 7.1 Refer to SI Appendix A and the attached Atlantic Cup Race Chart for course and mark designations.
- 7.2 All bearings are in degrees magnetic and distances are in nautical miles when not otherwise defined. Bearings and distances are approximate.
- 7.3 The Race Committee Signal Boat will prominently display the Course Number of the course to be sailed prior to the warning signal of each race.
- 7.4 Government buoys not listed as a mark of the course may be disregarded at the discretion of the competitor.

8 THE START

- 8.1 RRS 26 is amended to read as follows:

<i>Signal</i>	<i>Flag and Sound</i>	<i>Minutes Before Starting Signal</i>
Warning	One Red Flag Displayed, four Orange Flags Displayed, Sound Signal.	5
Preparatory	Red Flag removed	4
Three Minute	one orange flag removed	3
Two Minute	one orange flag removed	2
One-Minute	1 Long Sound, one orange flag removed.	1
Starting	Orange Flag Removed, Green Flag Displayed- 1 Sound Signal Orange Flag removed	GO!

- 8.2 The starting line will be between a staff displaying a black and white checkered “Line Flag” on the Race Committee Signal Boat and the course side of a nearby Sea Bags inflatable mark.
- 8.3 There will be NO CLASS FLAGS displayed. The Race Committee reserves the right to start the Centerboard Yacht Club fleets on subsequent races prior to the finishing of a given Class 40 race.

- 8.4 A yacht failing to start within 10 minutes after her starting signal shall be scored Did Not Start (DNS). This changes RRS A4.

9 THE FINISH

- 9.1 Saturday June 9th-The finish line will be between a staff displaying an Angola Cables “Line Flag” on the Race Committee Finish Boat (this will be different boat from the race committee start boat), and the course side of the nearby inflatable mark .
- 9.2 Sunday June 10th-The finish line will be between a staff displaying an Angola Cables Flag on the Race Committee Signal Boat and the course side of the nearby Sea Bags inflatable mark.

10 TIME LIMIT

- 10.1 The time limit for the first boat to sail the course and finish in accordance with RRS 28 is 120 minutes.
- 10.2 Boats failing to finish within 30 minutes after the first boat sails the course and finishes will be scored Did Not Finish (DNF) without a hearing. This changes rules 35, A4, and A5.

11 PROTESTS AND REQUESTS FOR REDRESS

- 11.1 All boats intending to protest are encouraged to notify the Race Committee at their earliest convenience after *finishing*.
- 11.2 Protests and requests for redress shall be delivered to Race Headquarters at Maine Wharf, Portland within 1 hour of the docking of the Race Committee Signal Boat.
- 11.3 Protest notices will be posted as soon as possible on the Official Notice Board. Hearings will be held at Regatta Headquarters.

12 SCORING

- 12.1 Refer to NOR 10.
- 12.2 For all classes, RRS A4.2 is altered so that a boat that did not *start*, did not *finish*, retired, or was disqualified shall be scored 0 points.

13 DISCLAIMER OF LIABILITY

- 13.1 Refer to NOR 15
- 13.2 RRS 4, Decision to Race - The Responsibility for a boat’s decision to participate in a race or to continue racing is hers alone.

14 INSURANCE

- 14.1 Refer to NOR Appendix A

15 Commercial Traffic

- 15.1 Competitors are reminded that Portland Harbor and its approaches are considered channels for commercial traffic and vessels in said channels may be restricted in their ability to maneuver. Casco Bay Lines (Ferry Company) has several routes that will cross the race course.
- 15.2 All racers shall follow the US Inland Navigational Rules.

16 CONTACTS

Organizing Authority: Manuka Sports Event Management

Race Director: Hugh Piggin

Tel: 401-662-9261

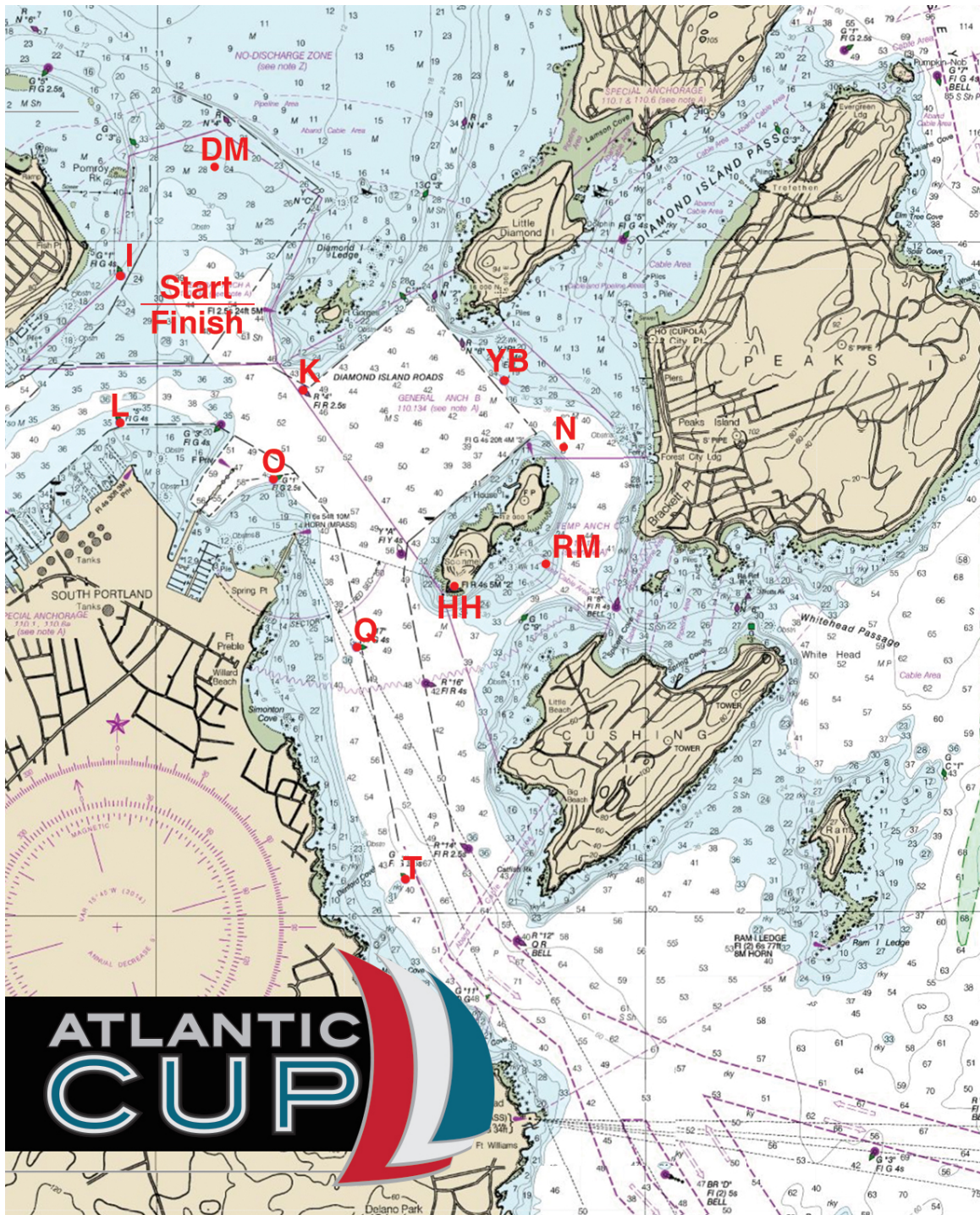
Email: hugh@manukasem.com

Website: www.AtlanticCup.or

Appendix A
Course and Mark Descriptions

Please refer to NOAA Chart #13292 for specific buoy locations

<u>Mark Label</u>	<u>Chart Designation</u>	<u>Location</u>
DM	Drop Mark	In the area NE of fish point
L	G "5"	43.657608, -70.235816
YB	Y "B" (S of little Diamond Is)	43.659696, -70.209622
O	G "1"	43.654691, -70.225217
N	GC "1"	43.656173, -70.205442
Q	G "17"	43.646520, -70.219751
T	G "13"	43.635655, -70.216724
I	Drop Mark	43.664782, -70.235253
K	R "4"	43.659278, -70.223626
RM	Drop Mark	43.650365, -70.208626
HH	House Island and Drop Mark South of House	43.649068, -70.213779



PORTLAND INSHORE SERIES COURSES

Course	Marks	Rounding	Course	Marks	Rounding
#1	START	5.25nm	#6	START	6.4nm
	T	port		Q	port
	DM	Port		RM	port
	Finish			N	port
#2	START	8.5nm	#6	L	stb
	T	port		DM	stb
	DM	port		O	stb
	I	port		Finish	
	Q	port	#7	START	5.6nm
	DM	port		Q	port
#3	Finish			DM	port
	START	10.5nm		I	port
	T	port		Q	port
	DM	port		DM	port
	L	port		Finish	
	YB	stb	#8	START	4.1.nm
	T	stb		L	port
#4	DM	prt		YB	port
	Finish			L	port
	START	10.5nm		K	port
	T	port	#9	Finish	
	HH	stb		START	3.9nm
	YB	port		L	port
	L	stb		K	port
#5	DM	stb	#9	DM	port
	T	port		L	port
	DM	port		DM	port
	L	port		Finish	
	Finish		#10	START	4.3nm
				DM	port

Course	Rounding		Rounding	
	Start	Finish	Start	Finish
#11	START	3.4nm	START	3.4nm
	DM	port	DM	port
	I	port	I	port
	Q	port	Q	port
	Finish		Finish	
#12	Start	6.5nm	Start	6.5nm
	L	port	L	port
	YB	port	YB	port
	L	port	L	port
	YB	port	YB	port
	L	stb	L	stb
	DM	stb	DM	stb
#13	START	10.4nm	START	10.4nm
	DM	port	DM	port
	T	port	T	port
	DM	port	DM	port
	Q	port	Q	port
	DM	port	DM	port
	O	port	O	port
	DM	port	DM	port
#14	START	5.9nm	START	5.9nm
	L	port	L	port
	YB	stb	YB	stb
	Q	port	Q	port
	RM	port	RM	port
	N	port	N	port
	O	stb	O	stb
	YB	port	YB	port
#15	K	stb	K	stb
	Finish		Finish	